

## BUTTERFLIES

- \_\_\_\_\_ Common Buckeye (A)
- \_\_\_\_\_ American Copper (A)
- \_\_\_\_\_ Orange Sulphur (C)
- \_\_\_\_\_ Clouded Sulphur (C)
- \_\_\_\_\_ Cloudless Sulphur (C)(F)
- \_\_\_\_\_ Cabbage White (C)
- \_\_\_\_\_ Eastern Tailed Blue (C)
- \_\_\_\_\_ Gray Hairstreak (C)
- \_\_\_\_\_ Common Wood Nymph (C)
- \_\_\_\_\_ Monarch (C)
- \_\_\_\_\_ Little Wood Satyr (C)
- \_\_\_\_\_ American Lady (C)
- \_\_\_\_\_ Eastern Tiger Swallowtail (U)
- \_\_\_\_\_ Sleepy Orange (U)(F)
- \_\_\_\_\_ Red-banded Hairstreak (U)
- \_\_\_\_\_ Holly Azure (U)(S)
- \_\_\_\_\_ Variegated Fritillary (U)
- \_\_\_\_\_ Red-spotted Purple (U)
- \_\_\_\_\_ Pearl Crescent (U)
- \_\_\_\_\_ Eastern Comma (U)
- \_\_\_\_\_ Question Mark (U)
- \_\_\_\_\_ Red Admiral (U)
- \_\_\_\_\_ Painted Lady (U)
- \_\_\_\_\_ Black Swallowtail (R)
- \_\_\_\_\_ Little Yellow (R)(F)
- \_\_\_\_\_ Summer Azure (R)
- \_\_\_\_\_ Viceroy (R)
- \_\_\_\_\_ Mourning Cloak (R)

## SKIPPERS

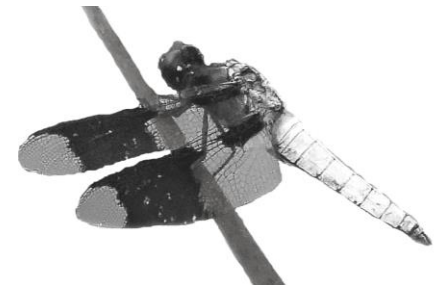
- \_\_\_\_\_ Least Skipper (C)
- \_\_\_\_\_ Sachem (C)(F)
- \_\_\_\_\_ Salt Marsh Skipper (C)
- \_\_\_\_\_ Silver-spotted Skipper (U)
- \_\_\_\_\_ Juvenal's Duskywing (U)(S)
- \_\_\_\_\_ Fiery Skipper (U)(F)
- \_\_\_\_\_ Broad Winged Skipper (U)
- \_\_\_\_\_ Zabulon Skipper (U)
- \_\_\_\_\_ Common Checkered Skipper (U)(F)
- \_\_\_\_\_ Dun Skipper (R)
- \_\_\_\_\_ Tawny-edged Skipper (R)

Checklist developed and maintained by  
Richard Orr, [www.marylandinsects.com](http://www.marylandinsects.com)

The cover picture is a  
male Common  
Whitetail.

Published by the National Park Service  
Last revision December, 20019

**CHECKLIST OF THE  
DRAGONFLIES,  
DAMSELFLIES,  
BUTTERFLIES  
AND SKIPPERS  
OF THE  
ASSATEAGUE ISLAND  
NATIONAL SEASHORE  
(Worcester County, Maryland)**



This checklist covers the known dragonflies/damselflies and Butterflies/Skippers for Assateague Island National Seashore.

The seasonal occurrence and likelihood of seeing the adults in this checklist are very general. Some are present in good numbers but are not likely to be encountered by a general naturalist. Other species are very conspicuous and even though they are few in number stand out and are easily noticed. Seasonal occurrences presented are also generalized because presence or absence does not necessarily equate to the season that a dragonfly or butterfly will be most likely noticed.

Please report any sighting of species not listed, to park staff.

**Please do NOT harm or collect any species!**

#### LIKELIHOOD OF SEEING ADULTS

(A) = Abundant and conspicuous in appropriate habitat

(C) = Common in suitable habitat

(U) = Present, but could easily be missed in suitable habitat

(R) = Not likely to be encountered

#### ADULT FLIGHT SEASON

(S) = usually noticed only in the spring or early summer

(F) = usually noticed only in the late summer or fall

If not marked, found from spring through fall.

## DRAGONFLIES

### DARNERS

- \_\_\_\_\_ Common Green Darner (A)(S)(F)
- \_\_\_\_\_ Swamp Darner (U)
- \_\_\_\_\_ Shadow Darner (R)(F)

### SKIMMERS

- \_\_\_\_\_ Seaside Dragonlet (A)
- \_\_\_\_\_ Needham's Skimmer (A)
- \_\_\_\_\_ Four-spotted Pennant (U)
- \_\_\_\_\_ Common Pondhawk (C)
- \_\_\_\_\_ Blue Dasher (C)
- \_\_\_\_\_ Wandering Glider (C)
- \_\_\_\_\_ Spot-winged Glider (C)
- \_\_\_\_\_ Carolina Saddlebags (C)
- \_\_\_\_\_ Black Saddlebags (C)
- \_\_\_\_\_ White-spangled Skimmer (C)
- \_\_\_\_\_ Common Whitetail (C)
- \_\_\_\_\_ Painted Skimmer (C)
- \_\_\_\_\_ Twelve-spotted Skimmer (U)
- \_\_\_\_\_ Bar-winged Skimmer (U)
- \_\_\_\_\_ Great Blue Skimmer (U)
- \_\_\_\_\_ Blue-faced Meadowhawk (R)(F)
- \_\_\_\_\_ Autumn Meadowhawk (R)(F)
- \_\_\_\_\_ Variegated Meadowhawk (R)(F)
- \_\_\_\_\_ Eastern Amber Wing (R)

## DAMSELFLIES

### SPREADWINGS

- \_\_\_\_\_ Southern Spreadwing (U)
- \_\_\_\_\_ Slender Spreadwing (U)

### POND DAMSELS

- \_\_\_\_\_ Familiar Bluet (A)
- \_\_\_\_\_ Citrine Forktail (A)
- \_\_\_\_\_ Rambur's Forktail (A)
- \_\_\_\_\_ Fragile Forktail (U)
- \_\_\_\_\_ Orange Bluet (U)
- \_\_\_\_\_ Slender Bluet (R)